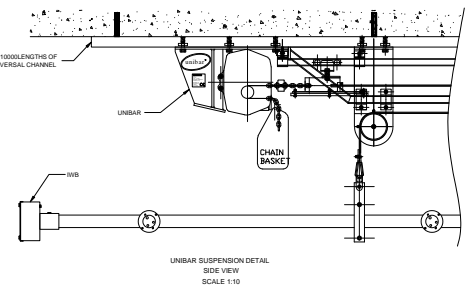
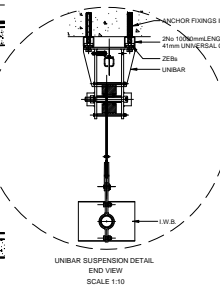
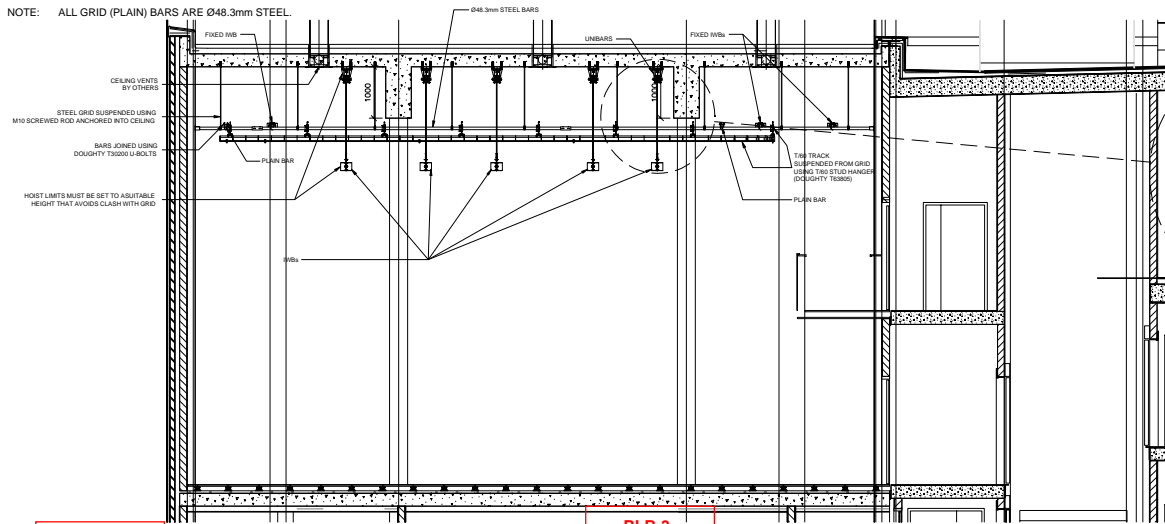
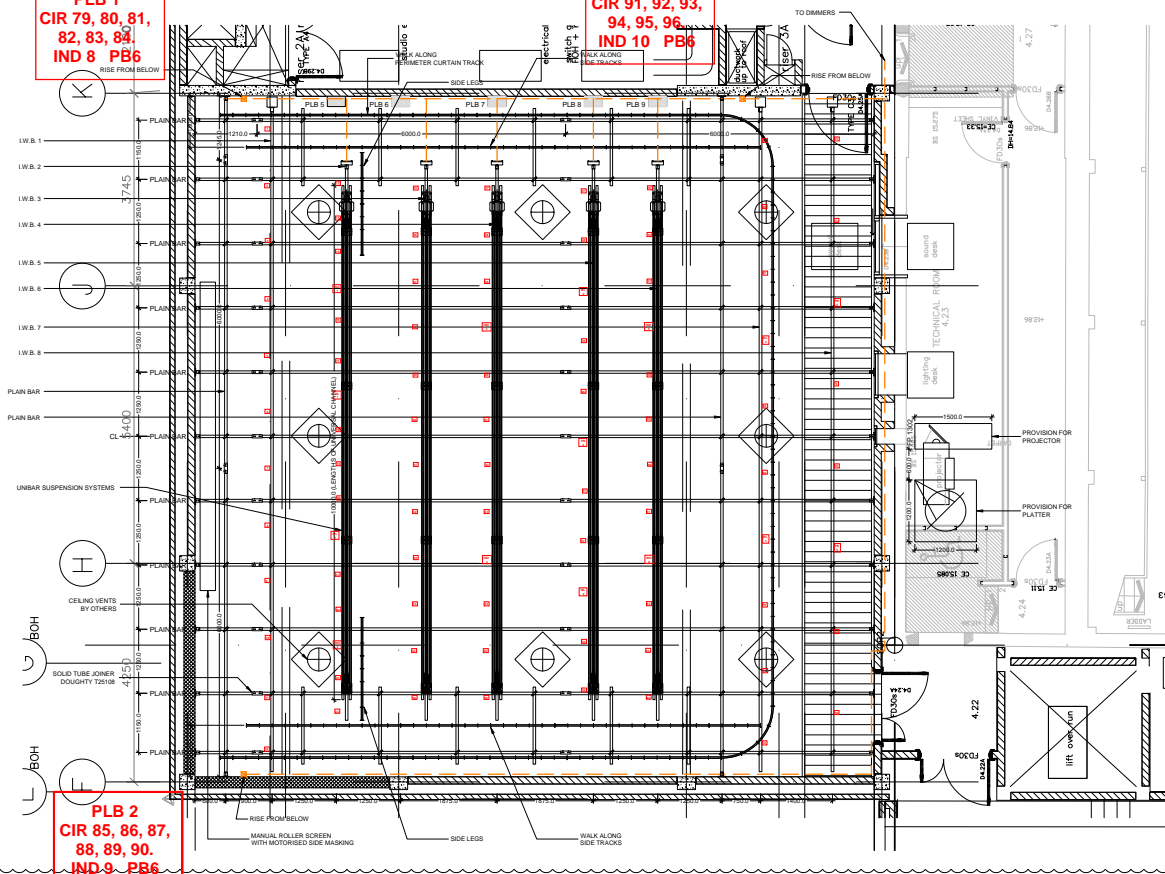


NOTE: ALL GRID (PLAIN) BARS ARE Ø48.3mm STEEL.



PLB 1
CIR 79, 80, 81,
82, 83, 84,
IND 8 - PB6

PLB 3
CIR 91, 92, 93,
94, 95, 96,
IND 10 - PB6



PLB 2
CIR 85, 86, 87,
88, 89, 90,
IND 9 - PB6

PRODUCTION LIGHTING CONTAINMENT (MANS)

REV	DATE	DESCRIPTION	BY
D	12.06.06	UNBAR SUSPENSION DETAILS ADDED	KM
C	27.01.06	CONTAINMENT NOTATION ADDED	KM
B	16.08.05	CHANGES TO GRID, PLBs ADDED	KM
A	28.07.05	CHANGES TO TRACK	KM

STATUS FOR APPROVAL

PROJECT		
GRAND OPERA HOUSE BELFAST		
DRAWING TITLE		
STUDIO SPACE LIGHTING GRID LAYOUT		
DRAWN BY K.RKD	DATE DRAWN 29.02.05	ORIGINATOR J.P.K.
SCALE 1:500/1:10	REFER DRAWING	ORIGINAL MEDIA SIZE A1
DRAWING No. NL_7329-200-001		
REVISION D		

Northern Light
Performing Arts Technology

Edinburgh Tel: +44 (0)131 622 9100 Fax: +44 (0)131 622 9101
E-mail: enquiries@northernlight.co.uk